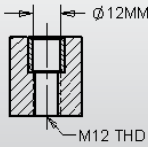


5-Axis Subplates

Standard subplates mount to machine table with center bore and do not include mounting holes.

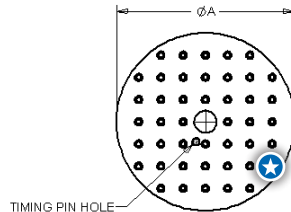
- Material: 1018 Steel
- Thickness Tolerance ± 0.005
- Flat & Parallel within .0005"/Ft. (.013mm)
- Includes Pre-Installed QLS Bushings



★ = Jergens QLS
 Quick Locating System (QLS) Bushings are hardened and ground for accurate and repeatable setups. Use in combination with 12mm QLS dowel pins or shoulder screws.

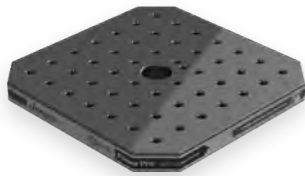


Round

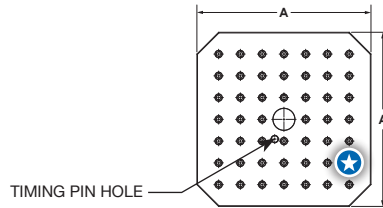


5-Axis Subplate

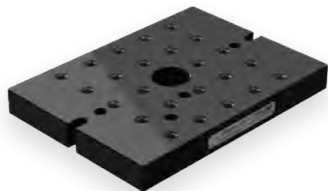
Part Number	Style	A (mm)	Thickness of Plate (mm)	Locating Method	Timing Pin	Mounting Type	Grid	Weight lbs (Kgs)
5SP130	Round	130	35	Center (50H7), Timing Pin	5LP1225001	12mm SHCS	50mm x 50mm	6.3 (2.86)
5SP160	Round	160	35	Center (50H7), Timing Pin	5LP1225001	12mm SHCS	50mm x 50mm	10.36 (4.7)
5SP210	Round	210	35	Center (50H7), Timing Pin	5LP1225001	12mm SHCS	50mm x 50mm	18.83 (8.54)
5SP250	Round	250	35	Center (50H7), Timing Pin	5LP1225001	12mm SHCS	50mm x 50mm	26.5 (12)
5SP310	Round	310	35	Center (50H7), Timing Pin	5LP1225001	12mm SHCS	50mm x 50mm	41.89 (19)
5SP400	Round	400	35	Center (50H7), Timing Pin	5LP1225001	12mm SHCS	50mm x 50mm	70.44 (31.95)
5SP500	Round	500	35	Center (50H7), Timing Pin	5LP1225001	12mm SHCS	50mm x 50mm	110.9 (50.3)
5SP630	Round	630	35	Center (50H7), Timing Pin	5LP1225001	12mm SHCS	50mm x 50mm	176.8 (80.2)
5SP800	Round	800	35	Center (50H7), Timing Pin	5LP1225001	12mm SHCS	100mm x 100mm	296.3 (134.4)



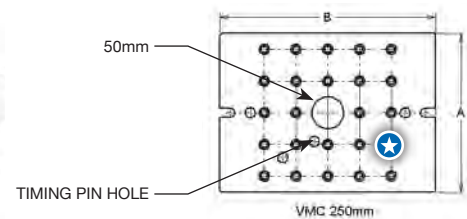
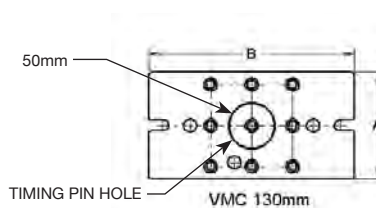
Square



Part Number	Style	A (mm)	Thickness of Plate (mm)	Locating Method	Timing Pin	Mounting Type	Grid	Weight lbs (Kgs)
5SP400S	Square	400	35	Center (50H7), Timing Pin	5LP1225001	12mm SHCS	50mm x 50mm	88 (39.9)
5SP500S	Square	500	35	Center (50H7), Timing Pin	5LP1225001	12mm SHCS	50mm x 50mm	139.3 (63.2)



VMC



Part Number	Style	A (mm)	B (mm)	Thickness of Plate (mm)	Locating Method	Timing Pin	Mounting Type	Grid	Weight lbs (Kgs)
5QP130020	VMC	130	250	35	Center (50H7), Timing Pin	5LP1225001	12mm SHCS	50mm x 50mm	19.86 (9.01)
5QP250020	VMC	250	340	35	Center (50H7), Timing Pin	5LP1225001	12mm SHCS	50mm x 50mm	51.75 (23.47)